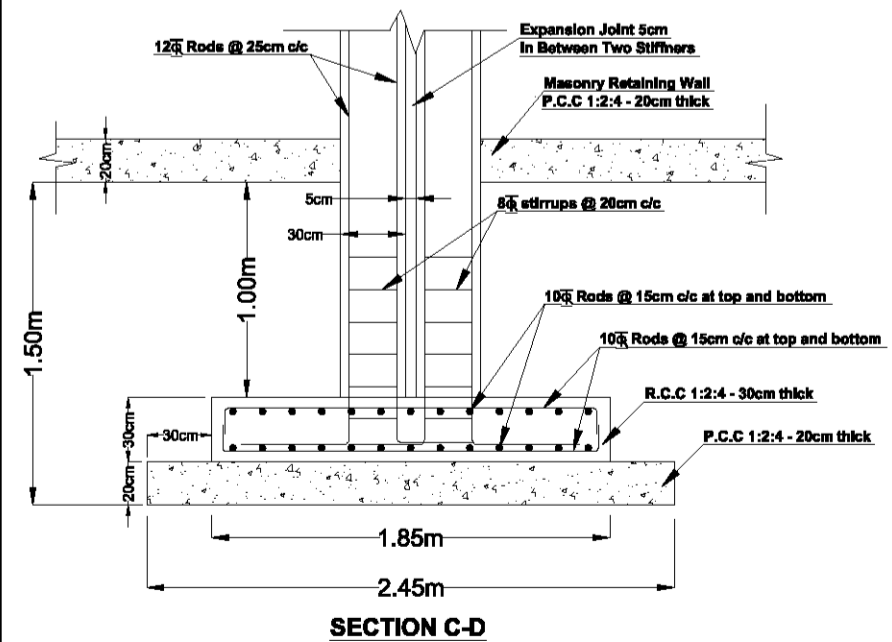


Plan of Combined Footing for Vertical Stiffner 7 & 8



Rev	Date	Drawn	Description	Ch'k'd	App'd
R0	20/04/12	LL	For Construction	A.K.A	D.R.C
R1	08/06/12	LL	For Construction	A.K.A	D.R.C
R2	19/11/15	LL	Issued for Tender	J.P	S.K.S