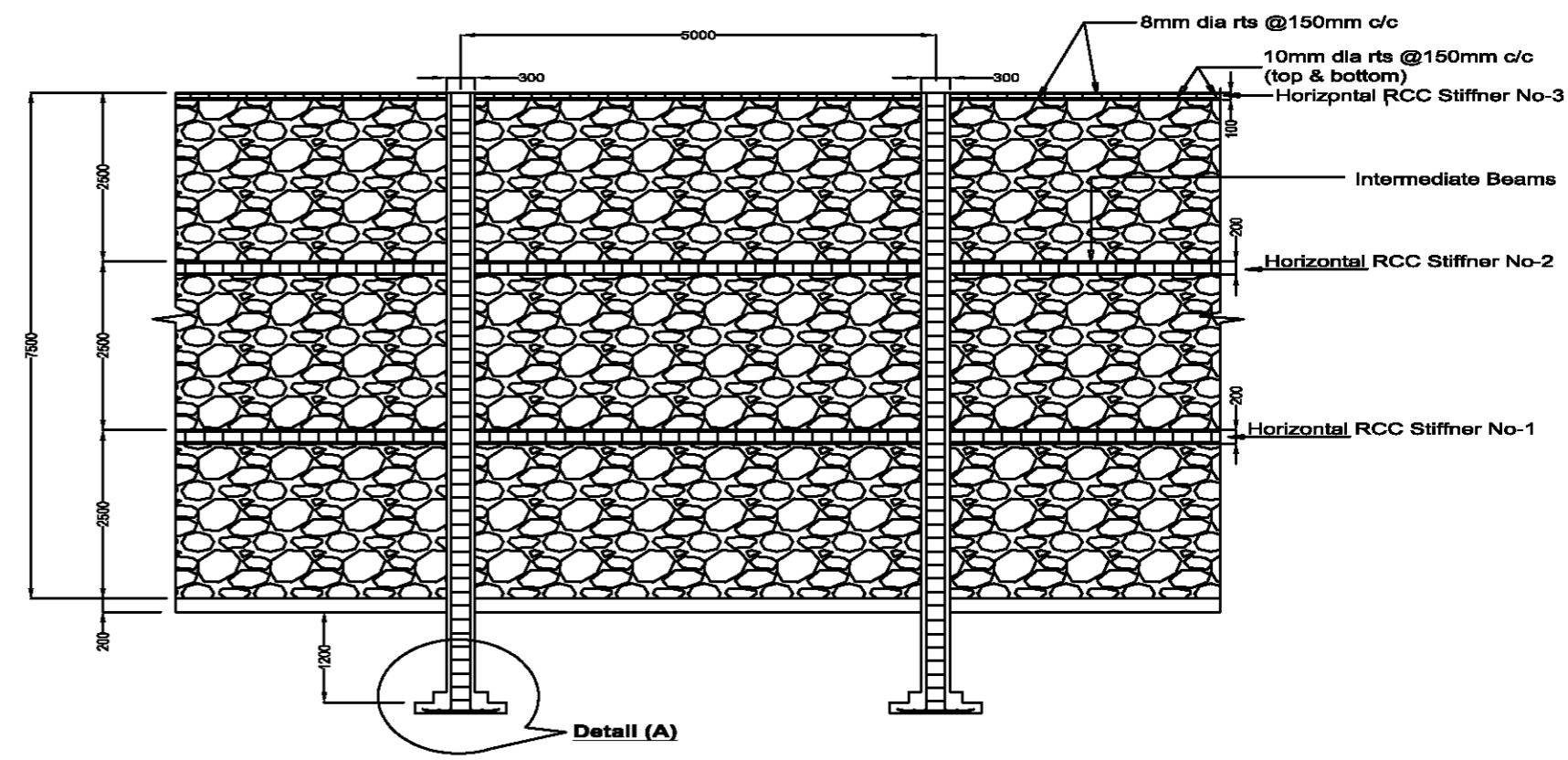
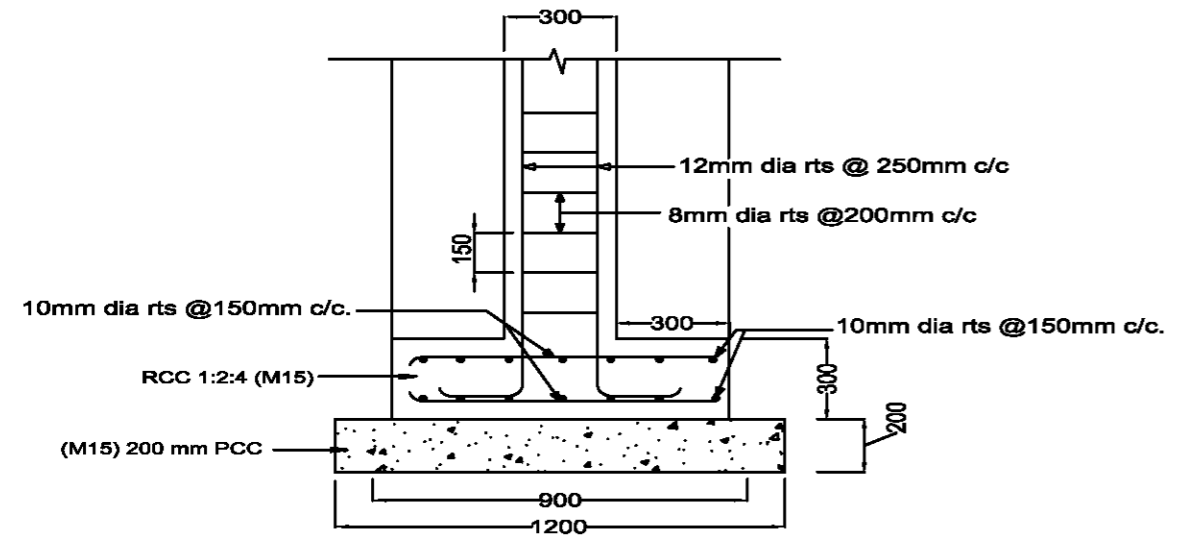


**DETAILS OF STONE MASONRY WALL**



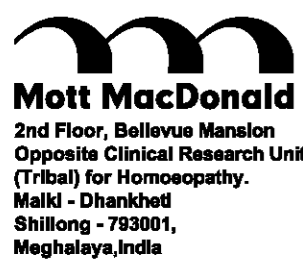
**SECTIONAL ELEVATION OF STONE MASONRY WALL**



**Details of - A Vertical Stiffner**

- Notes :**
- (1) Face of exposed wall should be groove pointed
  - (2) Any changes to be incorporated should be carried out with the approval of Project Manager, SIPMIU
  - (3) All Dimension are in Millimeter unless otherwise specified.

© Mott MacDonald  
 This document is issued for the party which commissioned it and for specific purposes connected with the captioned project only. It should not be relied upon by any other party or used for any other purpose.  
 We accept no responsibility for the consequences of this document being relied upon by any other party, or being used for any other purpose, or containing any error or omission which is due to an error or omission in data supplied to us by other parties.



T +91 (0) 364 2505 446  
 F +91 (0) 364 2505 674  
 W www.mottmac.com

Client  
**State Investment Program Management and Implementation Unit (SIPMIU)**  
 Government of Meghalaya

Rev	Date	Drawn by	Description	Chk'd by	App'd by
R0	20/04/11	L.L	For Construction	A.K.A	D.R.C
R1	08/06/12	L.L	For Construction	A.K.A	D.R.C
R2	19/11/15	L.L	Issued For Tender	J.P	S.K.S

Title  
**North Eastern Region Capital Cities Development Investment Programme for Shillong, Solid Waste Retaining Wall (Sheet 1 of 3)**

Drawing Number  
**MMD-260652-C-DR-00-SWM-0006**

Drawn by	L.L
Checked by	A.K.A
Approved by	D.R.C
Scale	1:1
Status	TEN
Rev	R2