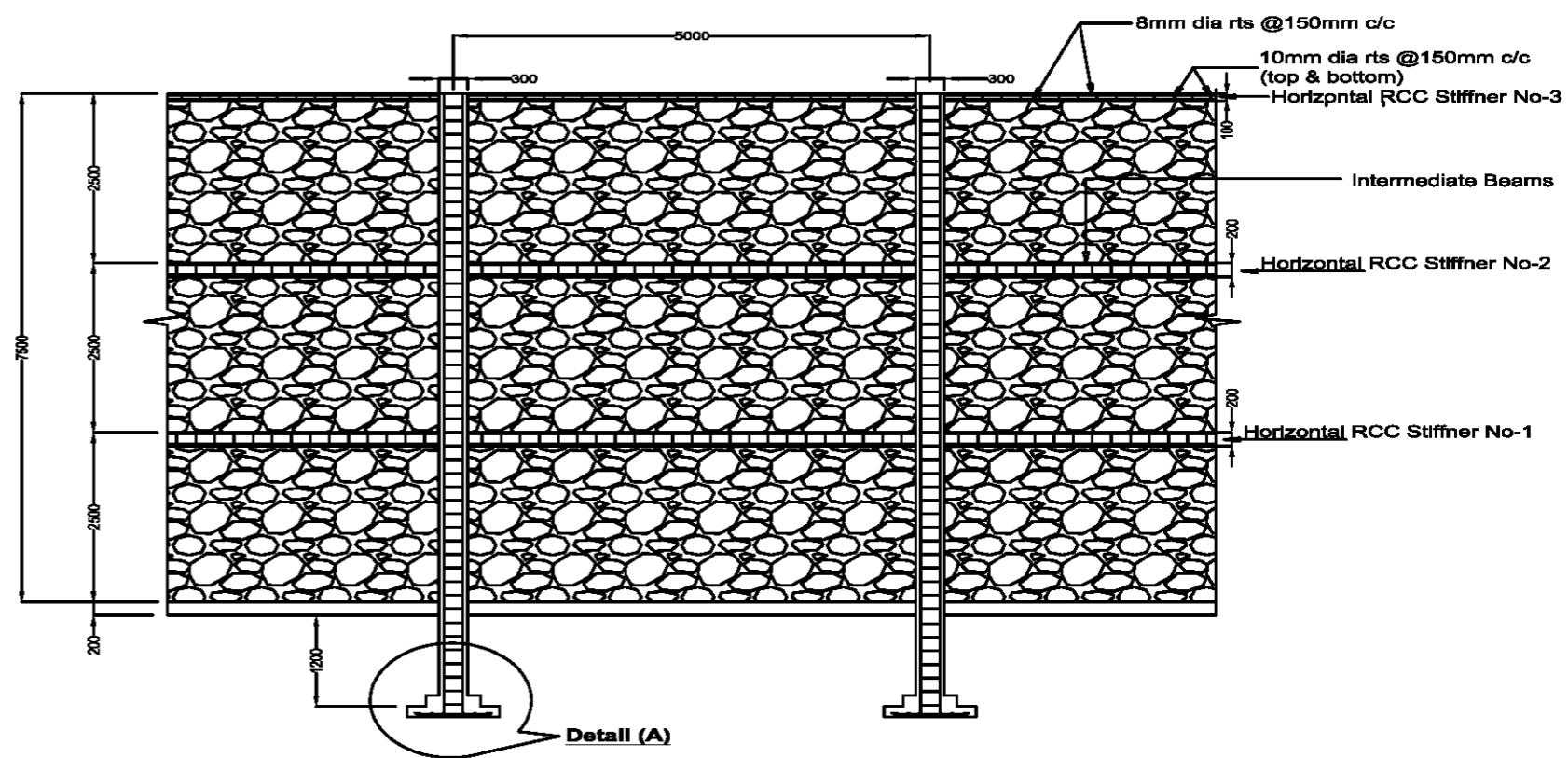
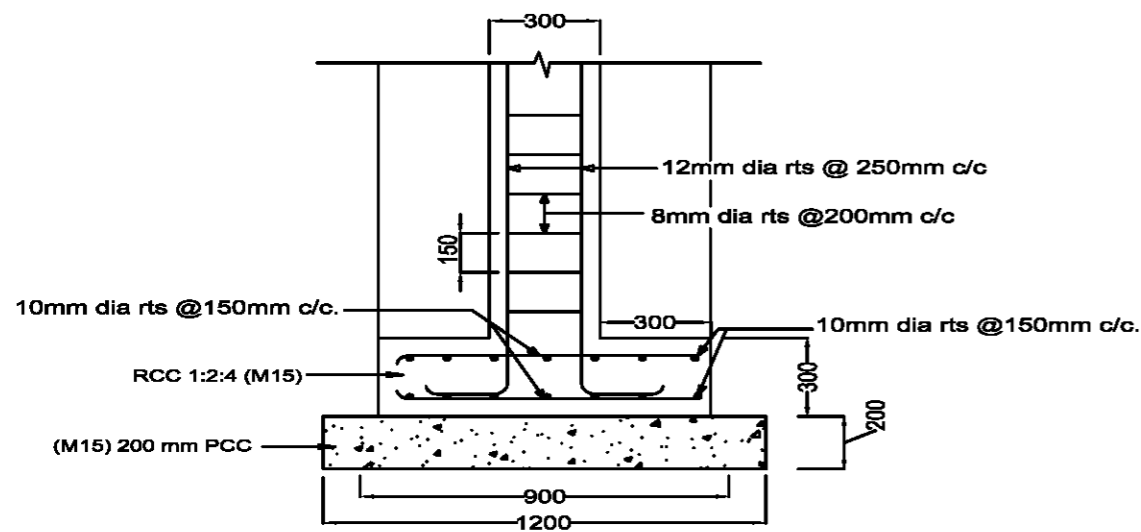


DETAILS OF STONE MASONRY WALL



SECTIONAL ELEVATION OF STONE MASONRY WALL



**Details of - A
Vertical Stiffner**

- Notes :**
- (1) Face of exposed wall should be groove pointed
 - (2) Any changes to be incorporated should be carried out with the approval of Project Manager, SIPMIU
 - (3) All Dimension are in Millimeter unless otherwise specified.



Mott MacDonald

2nd Floor, Bellevue Mansion
Opposite Clinical Research Unit
(Tribal) for Homoeopathy,
Malki - Dhankhet
Shillong - 793001,
Meghalaya, India

T +91 (0) 364 2505 446
F
W www.mottmac.com

Client
**State Investment Program Management
and Implementation Unit (SIPMIU)
Government of Meghalaya**

Rev	Date	Drawn by	Description	Chk'd by	App'd by
R0	08/06/12	L.L	For DPR	A.K.A	D.R.C
R1	03/04/13	L.L	For DPR	K.K	A.P
R2	27/05/13	L.L	For DPR	K.K	B.K.H
R3	04/01/14	L.L	Issued for Tender	D.K.C	B.K.H

Title
**North Eastern Region Capital Cities
Development Investment Programme
For Shillong, Solid Waste Management
Masonry Retaining Wall, Phase - II
Under Tranche -II**

Drawing Number
MMD-260652-C-DR-00-SWM-0004

Drawn by	L.L
Checked by	D.K.C
Approved by	B.K.H
Scale	1:10
Status	TEN
Rev	R3